

PRODUCT INFORMATION PACKET

Model No: 182TTFW16042
Catalog No: C223C
3,1800,TEFC,182TC,3/60/208-230/460
Totally Enclosed Fan Cooled (TEFC)



Regal and Marathon are trademarks of Regal Beloit Corporation or one of its affiliated companies.
©2018 Regal Beloit Corporation, All Rights Reserved. MC017097E

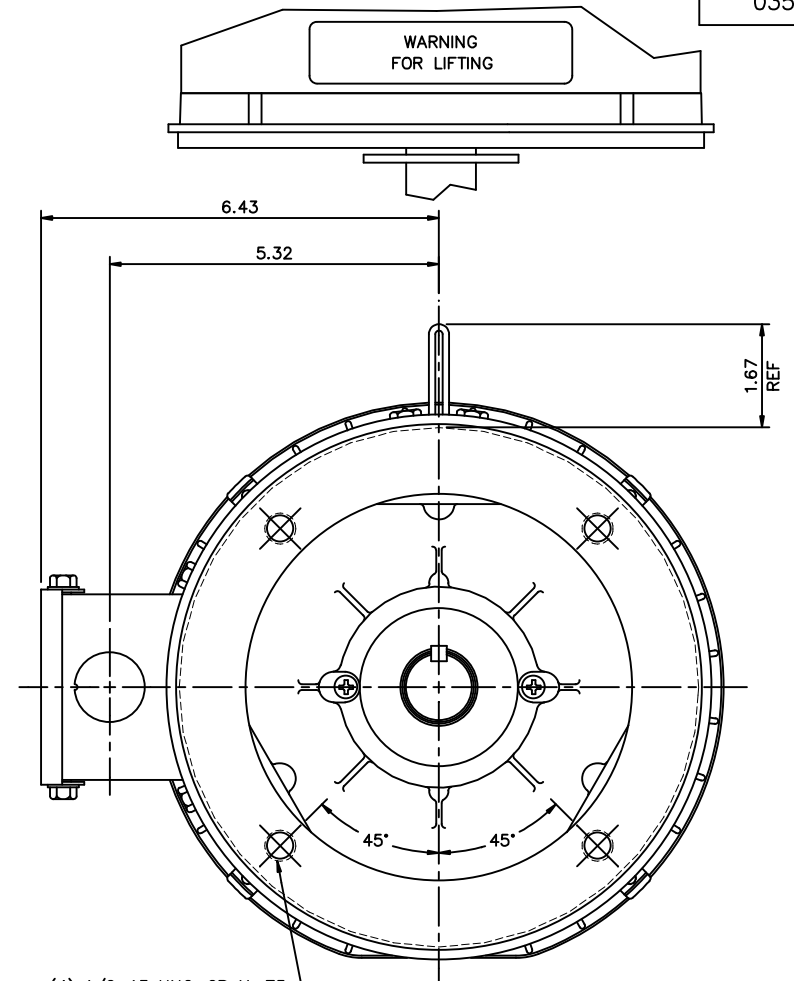
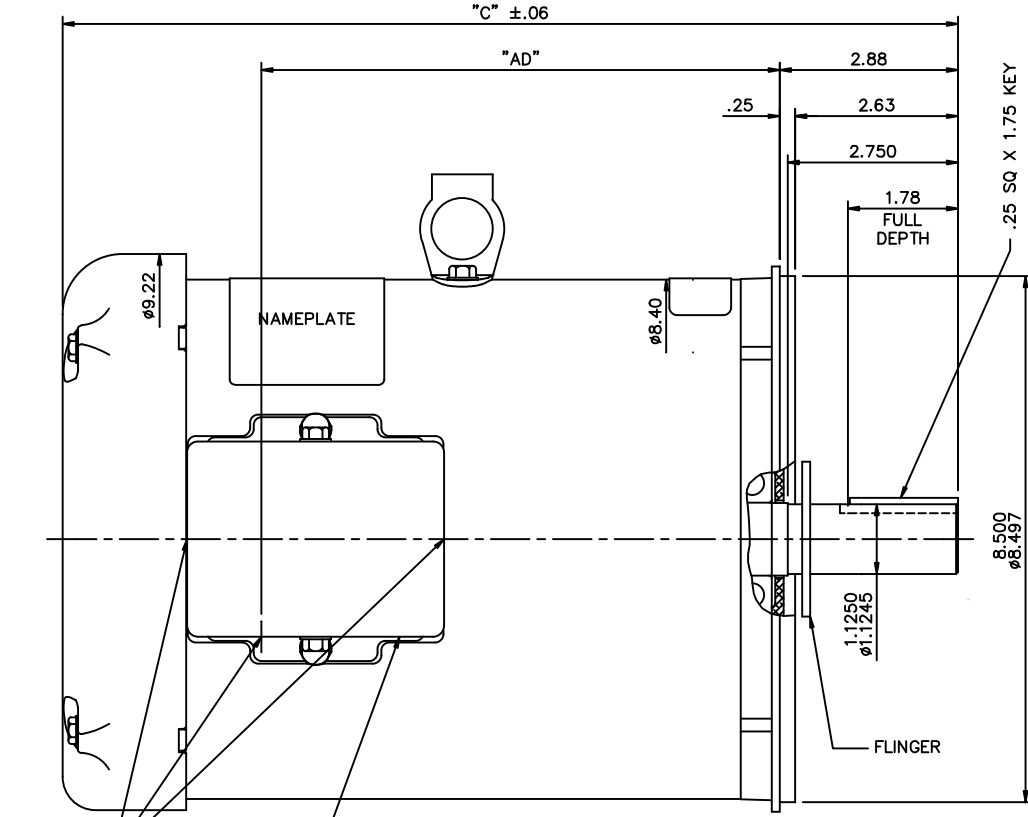


Nameplate Specifications

Output HP	3 Hp	Output KW	2.2 kW
Frequency	60 Hz	Voltage	208-230/460 V
Current	8.4-7.8/3.9 A	Speed	1770 rpm
Service Factor	1.15	Phase	3
Efficiency	89.5 %	Duty	Continuous
Insulation Class	F	Design Code	B
KVA Code	K	Frame	182TC
Enclosure	Totally Enclosed Fan Cooled	Overload Protector	No
Ambient Temperature	40 °C	Drive End Bearing Size	6206
Opp Drive End Bearing Size	6205	UL	Recognized
CSA	Y	CE	Y
IP Code	43		

Technical Specifications

Electrical Type	Squirrel Cage Induction Run	Starting Method	Across The Line
Poles	4	Rotation	Reversible
Mounting	Round	Motor Orientation	Horizontal
Drive End Bearing	Ball	Opp Drive End Bearing	Ball
Frame Material	Rolled Steel	Shaft Type	T
Overall Length	14.47 in	Frame Length	9.00 in
Shaft Diameter	1.125 in	Shaft Extension	2.88 in
Assembly/Box Mounting	F1 Only		
Outline Drawing	035541-900	Connection Diagram	005010.01ME



(3) 1.13 KOCKOUTS

DECAL - CONNECTION UNDER COVER (WHEN REQ'D)

GASKETS THROUGHOUT

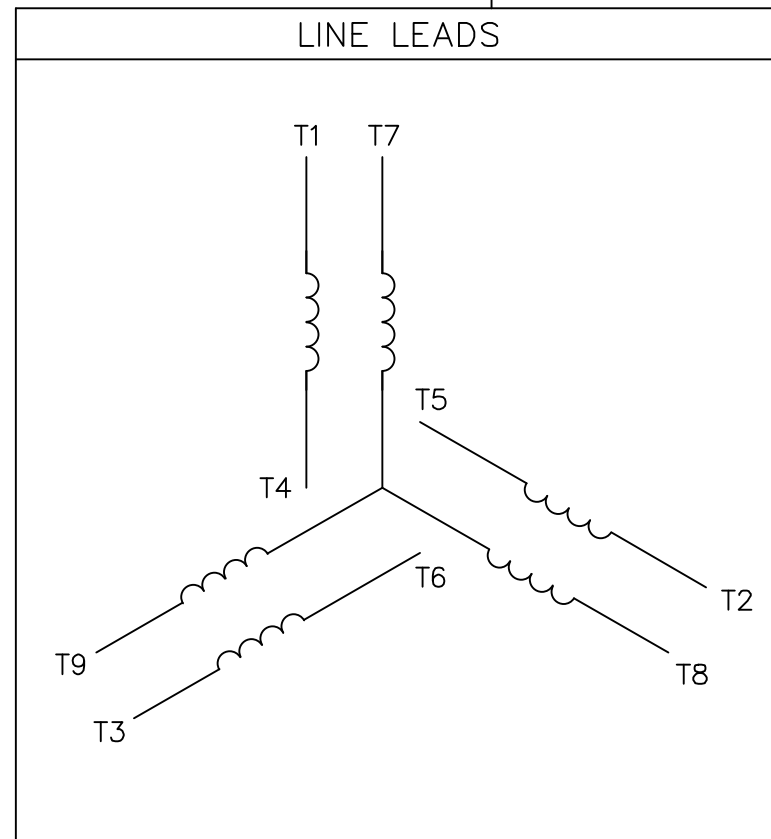
MAXIMUM FACE RUNOUT TO BE .004 T.I.R.
 MAXIMUM PILOT ECCENTRICITY TO BE .004 T.I.R.
 PERMISSIBLE SHAFT RUNOUT TO BE .002 T.I.R.

DASH NO.	"C"	"AD"
750	12.97	6.88
800	13.47	7.38
850	13.97	7.88
900	14.47	8.38
950	14.97	8.88
1000	15.47	9.38
1050	15.97	9.88
1100	16.47	10.38
1150	16.97	10.88

REVISION		BY & DATE	CHK	ANG	FINISH
02	REMOVED CE & INVERTER DUTY DECAL	PN 12/8/2010	ST	.XXX	±.005
01	REMOVED DECAL 004153.01	GWS 3/13/08		.XXXX	±.0005

TOLERANCES UNLESS SPECIFIED			DRAWN	VV	08/08/07
DEC.	INCHES		CHK		
.X	±.1	TITLE	OUTLINE - 180TC FRAME		
.XX	±.03	MAT'L	TEFC - "C" FACE		
.XXX	±.005	FINISH	GENERAL PURPOSE		
.XXXX	±.0005		SCALE	1=2	
NO.			REF	035537	
THIS DRAWING IN DESIGN AND DETAIL IS OUR PROPERTY AND MUST NOT BE USED EXCEPT IN CONNECTION WITH OUR WORK ALL RIGHTS OF DESIGN AND INVENTION ARE RESERVED THIS IS AN ELECTRONICALLY GENERATED DOCUMENT - DO NOT SCALE THIS PRINT		RFP	FMF	PREV	
		CAD FILE	035541	SIZE	DRAWING NO.
		DIST	NLV	B	035541
					REV.
					02

VIEW FROM OUTSIDE OF MOTOR AT SWITCH END.



VOLTAGE	L1	L2	L3	JOIN & INSULATE
HIGH	T1	T2	T3	(T4,T7) (T5,T8) (T6,T9)
LOW	T1,T7	T2,T8	T3,T9	T4,T5,T6

TOLERANCES UNLESS SPECIFIED		DRAWN RDW 04/12/02		MARATHON ELECTRIC		CHK		
DEC.	INCHES			TITLE		APPD		
.X	±.1			EXTERNAL WIRING DIAGRAM		SCALE 1=1		
.XX	±.01			3 PHASE W/O PROTECTOR		REF FIG.2-51		
.XXX	±.005			MAT'L. DECAL - 004014		FMF		
.XXXX	±.0005			FINISH		PREV		
NO.	REVISION	BY & DATE	CHK	ANG	±1/2"	SIZE	DRAWING NO.	REV.
			RFP	04/12/02		A	005010-01ME	
			DIST					

THIS DRAWING IN DESIGN AND DETAIL IS OUR PROPERTY AND MUST NOT BE USED EXCEPT IN CONNECTION WITH OUR WORK ALL RIGHTS OF DESIGN AND INVENTION ARE RESERVED THIS IS AN ELECTRONICALLY GENERATED DOCUMENT - DO NOT SCALE THIS PRINT

CERTIFICATION DATA SHEET

Model#: 182TTFW16042 AA WINDING#: T84174 FR 3
 CONN. DIAGRAM: 005010.01ME ASSEMBLY: F1 ONLY
 OUTLINE: 035541-900

TYPICAL MOTOR PERFORMANCE DATA

HP	KW	SYNC. RPM	F.L. RPM	FRAME	ENCLOSURE	KVA CODE	DESIGN
3&2	2.24&1.49	1800	1770&1475	182TC	TEFC	K	B

PH	Hz	VOLTS	FL AMPS	START TYPE	DUTY	INSL	S.F	AMB°C	ELEVATION
3	60/50	208- 230/460#190/ 380	8.4- 7.8/3.9&9.5/4. 75	ACROSS THE LINE	CONTINUOU S	F4	1.15/1.0	40	3300

FULL LOAD EFF: 89.5&88.5	3/4 LOAD EFF: 89.6	1/2 LOAD EFF: 87.7	GTD. EFF	ELEC. TYPE	NO LOAD AMPS
FULL LOAD PF: 80.5&74	3/4 LOAD PF: 73.8	1/2 LOAD PF: 62.7	0	SQ CAGE IND RUN	3.8 / 1.9

F.L. TORQUE	LOCKED ROTOR AMPS	L.R. TORQUE	B.D. TORQUE	F.L. RISE°C
8.914 LB-FT	67 / 33.5	22.5 LB-FT 253	36 LB-FT 404	40

SOUND PRESSURE @ 3 FT.	SOUND POWER	ROTOR WK^2	MAX. WK^2	SAFE STALL TIME	STARTS /HOUR	APPROX. MOTOR WGT
0 dBA	10 dBA	0.383 LB-FT^2	0 LB-FT^2	10 SEC.	0	0 LBS.

*** SUPPLEMENTAL INFORMATION ***

DE BRACKET TYPE	ODE BRACKET TYPE	MOUNT TYPE	ORIENTATION	SEVERE DUTY	HAZARDOUS LOCATION	DRIP COVER	SCREENS	PAINT
C-FACE	STANDARD	ROUND	HORIZONTAL	FALSE	NONE	FALSE	NONE	BLUE (ENAMEL)

BEARINGS		GREASE	SHAFT TYPE	SPECIAL DE	SPECIAL ODE	SHAFT MATERIAL	FRAME MATERIAL
DE	OPE						
BALL	BALL	POLYREX EM	T	NONE	NONE	AISI 1045 (C-240)	ROLLED STEEL
6206	6205						

THERMO-PROTECTORS				THERMISTORS	CONTROL	SPACE /n HEATERS
THERMOSTATS	PROTECTORS	WDG RTDs	BRG RTDs			
NONE	NOT	NONE	NONE	NONE	FALSE	NONE VOLTS

If Inverter equals NONE, contact factory for further information

INVERTER TORQUE: NONE
INV. HP SPEED RANGE: NONE
ENCODER: NONE
NONE NONE
NONE NONE PPR
BRAKE: NONE NONE
NONE P/N NONE
NONE NONE
NONE FT-LB NONE V NONE Hz

*
N
O
T
E
S
*

** Subject to change without notice.

Data Sheet

Date: 15-06-2017
 Customer: _____
 Attention: _____
 Submitted by: FAREEDA DUDEKULA



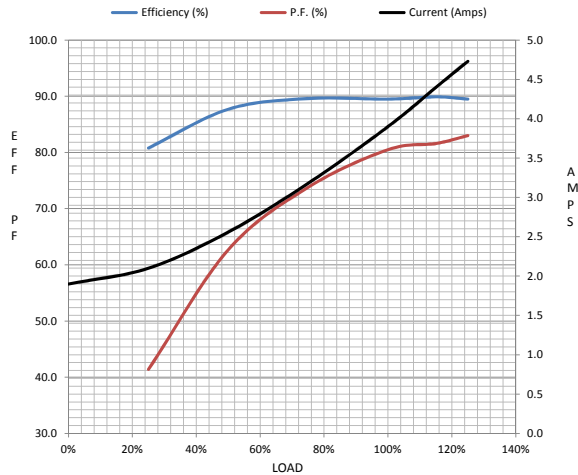
182TTFW16042

Submittal

Data @ 460 V

Motor Load Data									
Load	0%	25%	50%	75%	100%	115%	125%	LR	
Current (Amps)	1.90	2.10	2.56	3.2	3.9	4.4	4.7	33.5	
Torque (ft-lb)	0.00	2.20	4.4	6.6	8.9	10.3	11.2	22.5	
RPM	1800	1792	1785	1777	1770	1,766	1755	0	
Efficiency (%)		80.8	87.7	89.6	89.5	89.9	89.5		
P.F. (%)	6.9	41.4	62.7	73.8	80.5	81.6	83.0	0.0	

Motor Speed Data						Information Block	
	LR	Pull-Up	BD	Rated	Idle		
Speed (RPM)	0	900	1656	1770	1800	HP	3.0
Current (Amps)	33.5	33.0	21.5	3.9	1.90	Sync. RPM	1800
Torque (ft-lb)	22.5	21.0	36.0	8.9	0.00	Frame	182
						Enclosure	TEFC
						Construction	TFW
						Voltage	3-230/460#190/3V
						Frequency	60 Hz
						Design	B
						LR Code letter	K
						Service Factor	1.15
						Temp Rise @ FL	40 ° C
						Duty	CONT
						Ambient	40 ° C
						Elevation	1,000 feet
						Rotor/Shaft wk²	0.38 Lb-Ft²
						Ref Wdg	T84174 FR
						Sound Pressure @ 1M	0 dBA
						VFD Rating	NONE
						Outline Dwg	035541-900
						Conn. Diag	005010.01ME



Additional Specifications:				
0				
365THFS8036				
EQUIV CKT (OHMS / PHASE)				
R1	R2	X1	X2	Xm
0.0000	0.0000	0.0000	0.0000	0.0000

